



Eastern
Bluestar



Greek
Valerian



Foam Flower

April/May Blooms



Wild
Columbine



Creeping Phlox



Wood Poppy



Spiderwort

Thimbleweed



July Blooms

Bee Balm



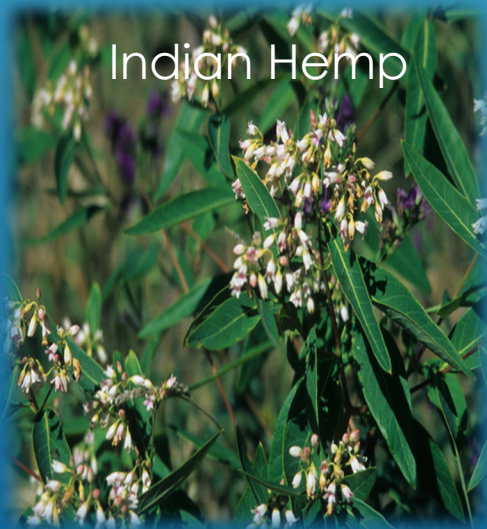
Spiked Blazing
Star



Honeysuckle



Indian Hemp



Summersweet



Boneset



August/September



White Snakeroot



Cardinal Flower



Mountain Mint



ZigZag Goldenrod



Joe Pye-weed



Obedient Plant



Smooth Aster

HERSHEY'S MILL NATURE GROUP

February 16, 2022



INTRODUCTION TO THE NATIVE PLANT & POLLINATOR GARDEN

- Derek Stedman
- Barbara Crispin
- Sue Staas
- Jim DiCarlo



WHERE IS THE NATIVE PLANT & POLLINATOR GARDEN?





A BIRD'S EYE VIEW



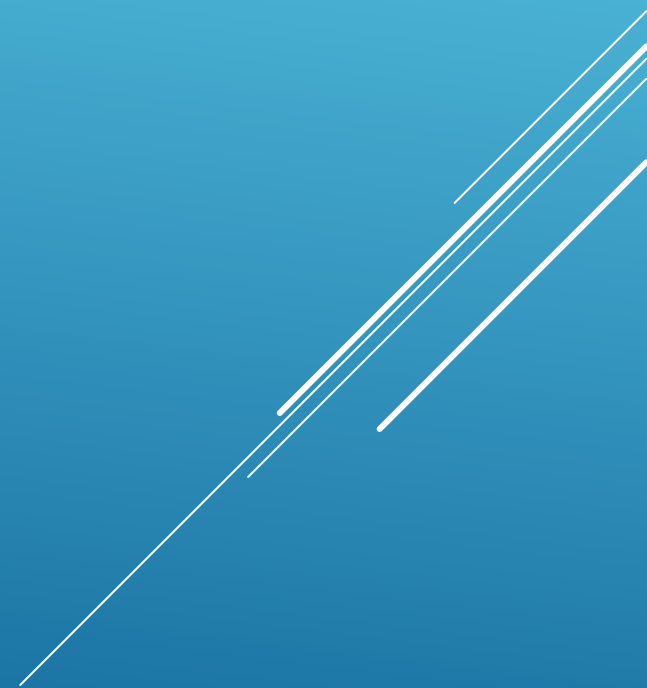


To encourage you to take small steps toward renewing our native wildlife by adding HOA-friendly native plants within Hershey's Mill

OUR PURPOSE



OUR GOALS



EDUCATION



Plants for Challenging Conditions

Plants for Dry Shade Under Trees. In a Dry Woodland. Will also work in moist/average conditions.



Herbaceous

- Aquilegia canadensis** Wild Columbine
- Aster (Symphyotrichum) cordifolius** Heart leaved Aster
- Aster (Eurybia) divaricatus** White Wood Aster
- Heuchera villosa** Autumn Alumroot
- Sedum ternatum** Stonecrop
- Solidago caesia** Blue stemmed Goldenrod
- Solidago flexicaulis** Zigzag Goldenrod
- Viola species** Violets

Ferns

- Polystichum acrostichum**

Woody

- Calycanthus floridus** Carolina Allspice, Sweetshrub
- Clethra alnifolia** Summersweet Clethra
- Fothergilla gardenii** Fothergilla
- Gaultheria procumbens** Wintergreen
- Rhododendron calendulaceum, R. periclymenoides**

Grasses

- Carex pensylvanica** Pennsylvania Sedge***

ts**

DIRTY DOZEN WEEDS ID CARDS

TEASEL



Teasel. Biennial invasive.

DEMONSTRATION

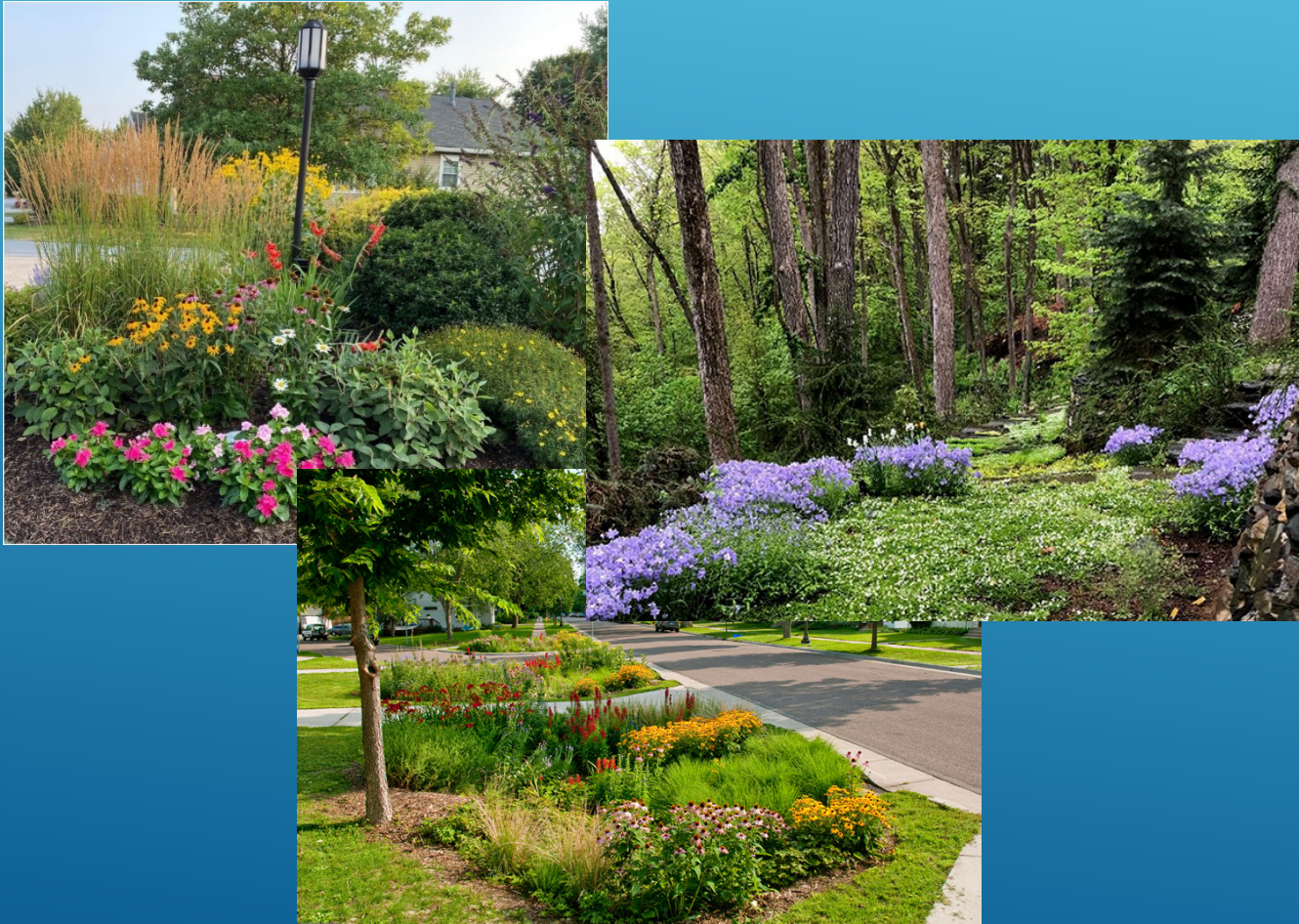




- Original pollinator garden
- Soon to be planted with HOA-friendly native plants
- Shorter varieties, concentration on flowering & year-round interest in the villages

CRAZY QUILT GARDEN

- Strictly uses native plants
- More suitable for common areas, rain gardens, and woodland borders



NATIVE PLANT GARDEN

FUTURE WOODLAND GARDEN

Boardwalk to creek with observation deck for birdwatching & enjoyment of time spent among the trees.



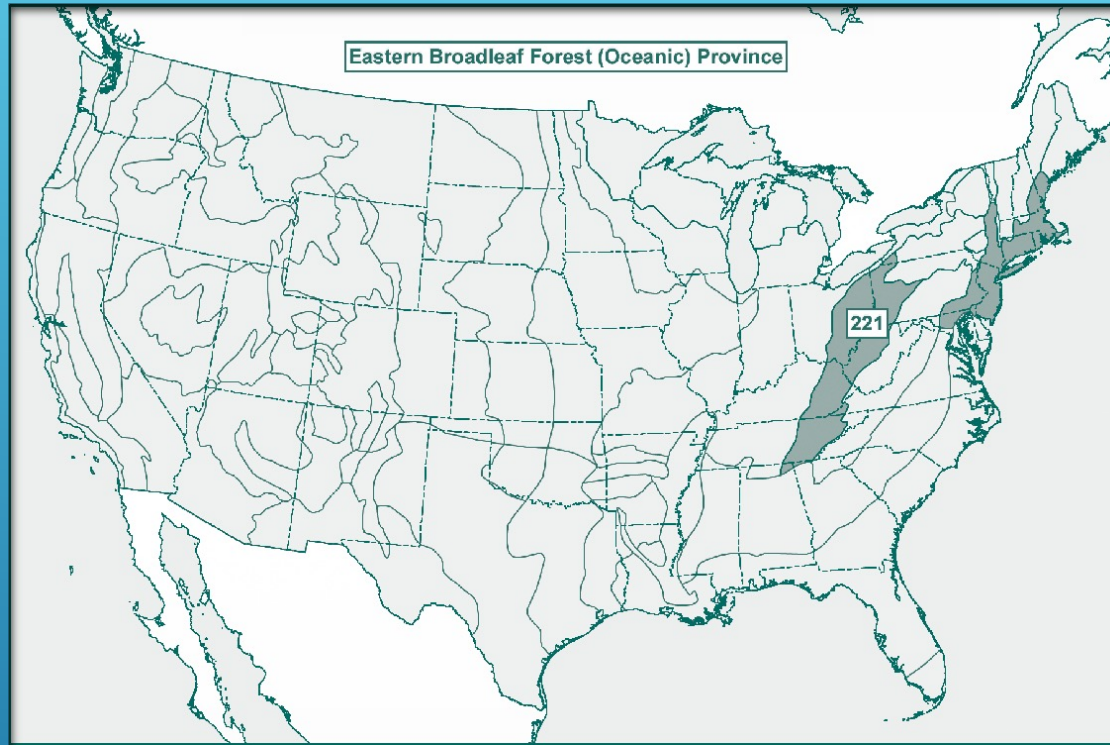
Inspiration





INTRO TO NATIVE PLANTS





- Region 221 in Bailey's Ecosystems Provinces
- Massachusetts to Ohio, New Hampshire to Maryland, Tennessee & West Virginia
- Trees, shrubs, vines, flowers, ferns and moss growing here prior to the arrival of Europeans to North America are our Native Plants.

EASTERN BROADLEAF FOREST

NATIVE PLANTS

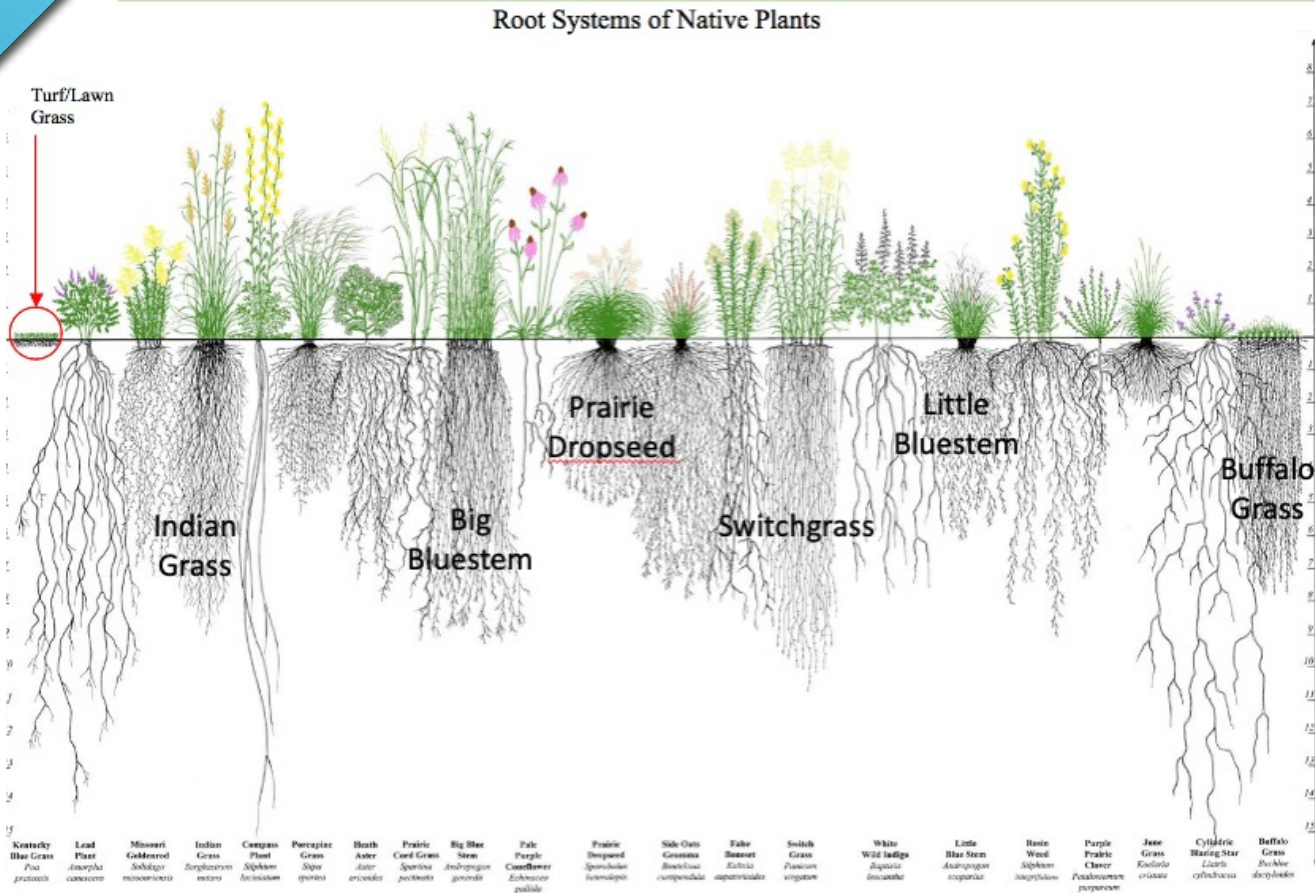


Diagram referenced from the "Conservation Research Institute"

- Are adapted to a region's growing conditions
- Have a stronger root structure
- Require less care
- Provide food and shelter for native wildlife



- Flowers offer nectar to bring insects and birds close.
- Pollen is brushed off/brushed on these flower visitors & carried to the next flower where the process continues.

NECTAR & POLLEN PLANTS

- Pollinators land & collect pollen with bits of previously collected pollen brushing off at each stop to complete the process.



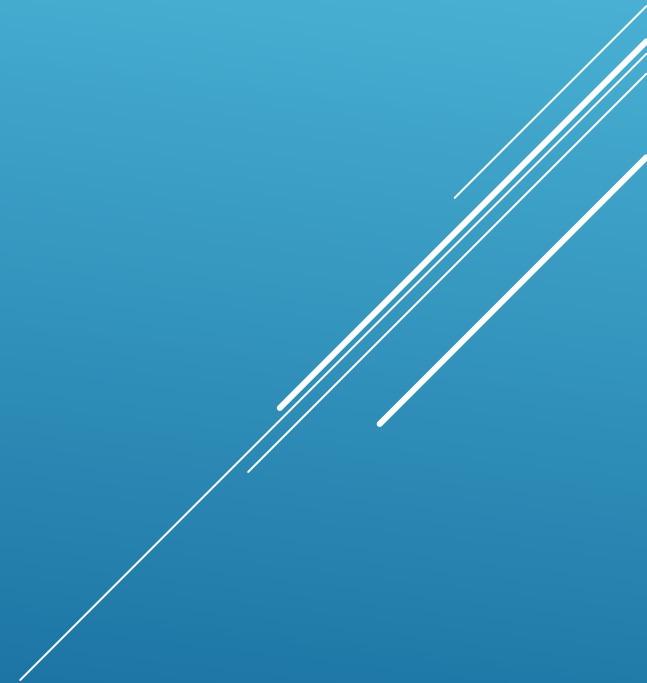
EARLY POLLEN SOURCES



- Pollinators land & collect pollen with bits of previously collected pollen brushing off at each stop to complete the process.



LATE POLLEN SOURCES



- Host plants for caterpillars
- Plants produce toxins to prevent being eaten
- Native insects and plants co-evolved
- No Milkweed=no Monarchs



LARVAL PLANTS

SEEDS FOR BIRDS

Ripe seed heads provide winter food





- Grasses
- Redbuds
- Oaks
- Hemlocks
- Pines

SHELTERING & NESTING

- We plant, weed, water, tag, promote visits, & observe health & activity in the garden.
- We write articles for the Guide and Digest, publish plant lists, & talk with HM residents about gardens.

SAY HELLO TO THE NATIVE PLANT & POLLINATOR GARDEN VOLUNTEERS

Decorative white lines consisting of several parallel diagonal strokes in the bottom right corner of the slide.



- ▶ Easiest to grow
- ▶ Busiest flowers
- ▶ Crowd favorites?

WHICH
POLLINATORS?

WHERE TO PUT THEM?

- Native plants aren't just for meadows & woodland anymore.
- Our HOA-friendly native plant list promotes shorter cultivars suitable for front yards & sidewalk flower beds and includes sun & moisture recommendations.
- It will be posted on the HMNG website for easy reference.



Local nurseries & plant sales:

- Brandywine Museum plant sale
- Stoneleigh/Natural Lands plant sale
- Tyler Arboretum plant sale
- Redbud Nursery

Where do YOU go?

WHERE TO GET THEM?



Garden Certifications

- Connect HMNG to national organizations & resources
- Encourage neighbors to work together for the benefit of our community wildlife
- Each village & homeowner can register their garden, yard, and/or common area to join the effort to build a more resilient ecosystem



Spring Kickoff: April 8 & 9 (Rain or Shine)

April 8, 7 PM @ Community Center: Jennifer Nichols, GreenWeaver Landscapes, will talk about the importance of native plants & tips for adding native plants to our gardens/common areas this year.

April 9, 10 AM to Noon @ Native Plant & Pollinator Garden:

- Walk the garden paths & see spring's progress.
- Share this year's gardening news & goals.
- Handouts available.
- And more....





A HM bus trip is scheduled to tour the formal gardens, testing gardens, woodland, and meadows of Mt. Cuba in Delaware. *See bus trip listings for more information.*

MAY 12: BUS TRIP TO MT. CUBA



A HM bus trip is scheduled for a guided tour of the gardens and main house at Stoneleigh: A Natural Garden in Villanova. See *bus trip listings* for more information.

SEPTEMBER 7: BUS TRIP TO STONELEIGH: A NATURAL GARDEN

Let's Talk!!

